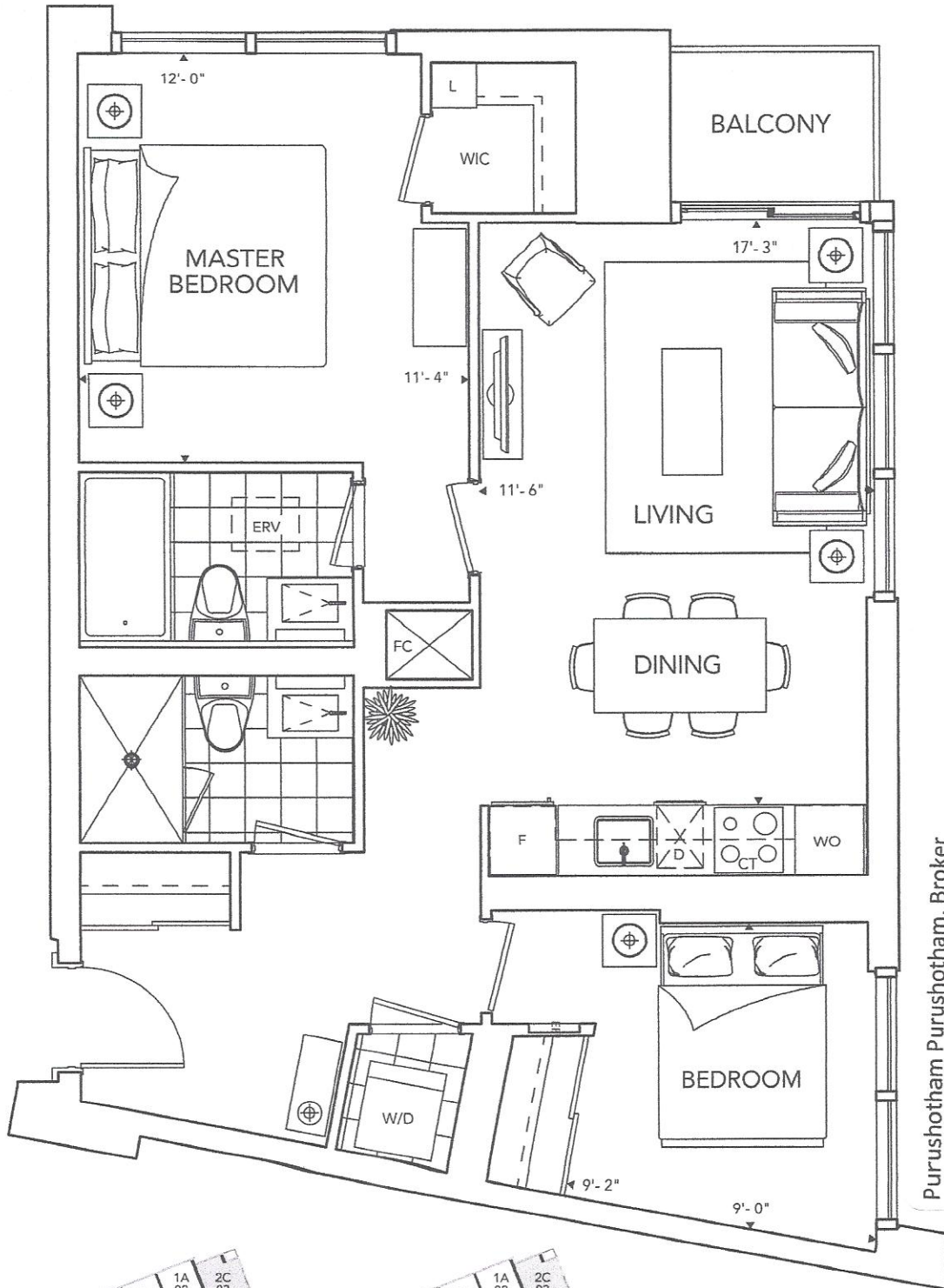
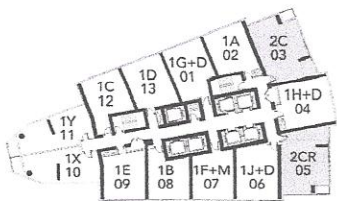


SUITE 20

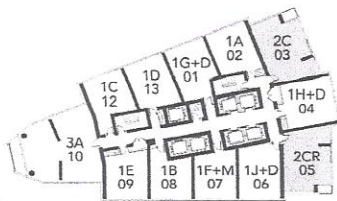
2 BEDROOM (03),(05)



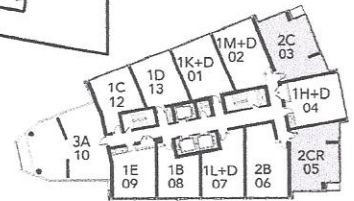
Purushotham Purushotham, Broker
 RE/MAX CONDOS PLUS CORP
 45 Harbour Sq. Toronto, M5J2G4
 Tel : 416-558-3538
 www.downtownreality.ca



Floors 8 - 28



Floors 29 - 33, 36 - 47

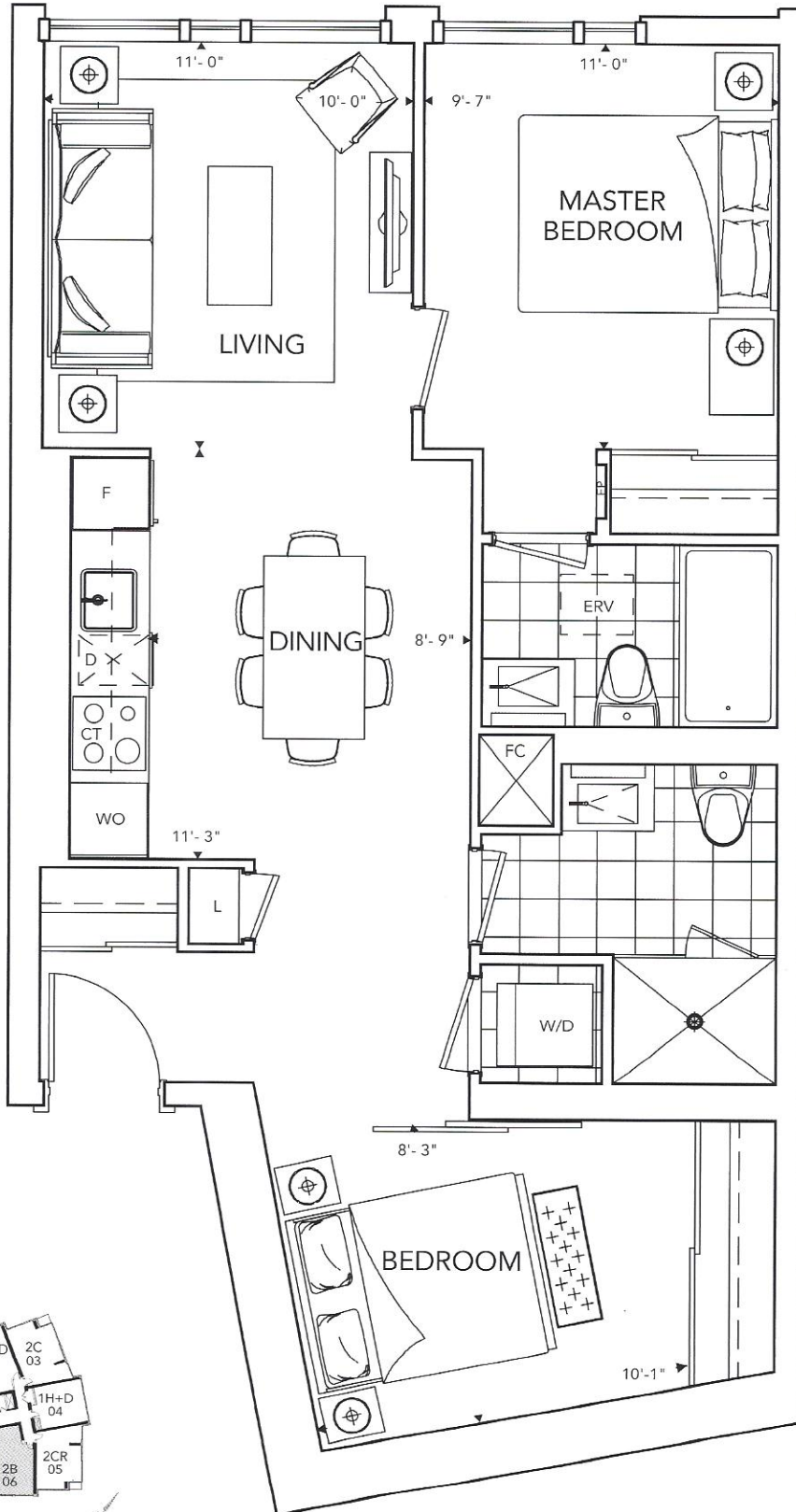


Floors 51 - 67

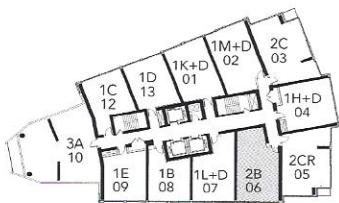
All dimensions are approximate and subject to normal construction variances. Dimensions may exceed the useable floor area. Sizes and specification subject to change without notice. Furniture is displayed for illustration purposes only and does not necessarily reflect the electrical plan for the suite. Suites are sold unfurnished. E.&O.E. Tridel®, Tridel Built for Life® and Tridel Built Green. Built for Life® are registered trademarks of Tridel and used under license. ©Tridel 2010. All rights reserved. October 2012.

SUITE 2B

2 BEDROOM (06)



Purushotham Purushotham, Broker
 RE/MAX CONDOS PLUS CORP
 45 Harbour Sq. Toronto, M5J2G4
 Tel : 416-558-3538
 www.downtownrealty.ca



Floors 50 - 62